

QUALIFIED Remodeler

BEST PRACTICES, PRODUCTS & DESIGN IDEAS

cygnus

[Contact Us](#) | [Careers](#) | [Calendar](#) | [Subscribe](#) | [Classifieds](#) | [e-Inquiry](#) | [Advertise](#)

[Home](#) | [News](#) | [Business](#) | [Remodeling Design](#) | [Products](#) | [Magazine](#) | [Blog](#) | [Buyer's Guide](#) | [Awards](#) | [Video Network](#)

Magazine Article

[Home](#) » [Qualified Remodeler](#) » [October 2006 Issue](#) » [Magazine Article](#)

[More News From Qualified Remodeler](#) | [More From The October 2006 Issue](#) | [More News From Master Design Awards 2006](#) | [More News From QR Staff](#)

 [Most Read](#)  [Most Emailed](#)  [E-mail Article](#)  [Print Article](#)

Finished Basement

By QR Staff

Gold Winner

Basement Retreats, Inc., Littleton, Colo.

Silver Winner:

Kaufman Construction Inc. Cumming, Iowa

Bronze Winner:

Bartelt Filo Design Build, Menomonee Falls, Wis.

Honorable Mention:

Gardner/Fox Associates, Bryn Mawr, Pa.

The main objective of this Morrison, Colo., finished basement project was primarily to create an entertaining area. This included a wine tasting and wet bar area, and entertainment zone, billiards room, spa retreat and guest room. The challenges that Basement Retreats, Inc., of Littleton, Colo., had to face in order to accomplish this project were a long stairway to the basement, extensive ductwork, plumbing and beams, and creating a real wine cellar effect with the illusion that the wine room was actually in an underground cellar.



To start, the staircase was turned at the bottom, adding a landing and steps to the side. This was done with a tumbled marble and an iron handrail. At the bottom landing of the stairs, a nine-pane window encased with stone permits you to gaze into the magnificent wine area below.

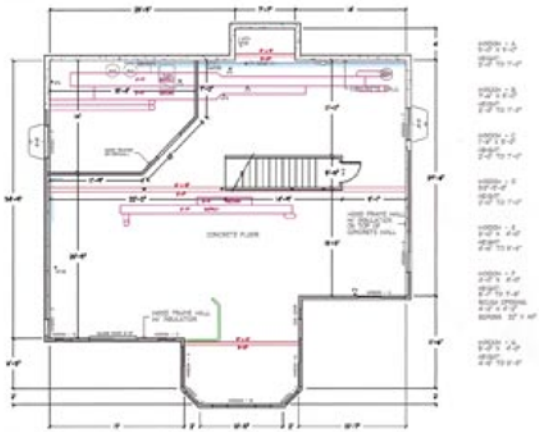
The wine racking system is composed of redwood and includes cherry countertops with custom designed venues, housing 2,500 bottles of wine. The use of Cliffstone and the knotty alder false beam through the center of the wine retreat gives a true cellar feel. Custom lighting composed of scones, overhead, spotlighting and indirect lighting accentuate the custom displays.

The luxurious spa refuge is showered with every amenity to indulge the most discriminating individual with the ultimate spa experience. The shower accommodates a steam shower, a two level bench seating area, two shower valves for dual showering and a custom shower pan of mosaic tile.

Two separate vanity areas are also found in this spa area. Both vanities are complete with natural cherry cabinetry. One vanity houses two vessel sinks with the faucets flowing from the wall. The other vanity is framed by an affluent barrel arch which contains a spa relaxation area. To top off this spa a 3-ft. Micro Rosone mosaic was placed in the center of the retreat.

To finish this basement a tray ceiling detail and arch in the main room added to hide a large structural beam and columns were disguised by raised panel millwork. The heavy hand texture applied throughout the basement exudes a sumptuous feel and is painted a luscious, rich burgundy with a chocolate glaze (with exception of the spa area). The burgundy with glaze is complemented by the cream color used for the trim and built-ins. Dimmers are placed throughout the entire basement to create an aesthetically pleasing mood.

After



Before floor plans

